

RATAN

• Quality. Commitment. Trust. •

Since 1988

LIVE A HIGH-CLASS LIFE!

RATAN  
GALAXY

# EXTRAORDINARY IN EVERY SENSE!

Embrace a lifestyle where every element espouses class! Where conveniences make everyday extraordinary.

An address that instils pride and where opulence is an understatement.

Welcome to Ratan Galaxy, the jewel of Vrindavan Yojna and a project highly appreciated and recommended by experts such as NDTV Profit.

Ratan Galaxy is an inspiring confluence of bespoke luxury, strategic location and trust of a brand name that's constructing landmarks since 1988.



# BESPOKE LUXURY THAT HAS IT ALL!

You think of it and Ratan Galaxy has it.

It's a hub of amenities that makes everything available within the complex.

Unwind in weekends in the amphitheatre or simply indulge in a game of cricket, lawn tennis or squash.

Take a dip in swimming pool or let your stress melt away in jacuzzi.

Or be a doting father to your parents in kids play area. Ratan Galaxy leaves no reason to venture out. It has all in it.

- CLUB HOUSE
- AMPHITHEATRE



- CHILDRENS PLAY AREA
- JOGGING TRACK



- SKATING RINK
- SWIMMING POOL



- GAZEBO
- GYM



# THOUGHTFUL ABODES FOR COMPLETE LIVING!

The homes in Ratan Galaxy are an epitome of ultimate luxury and ingenious space planning.

Every minute detail has been thoroughly thought through for a complete lifestyle. Right from spacious living rooms, expansive open balconies, spaced out soothing bedrooms, spacious modern kitchens, deftly designed kids room to store rooms. You enter a home that's ready for you to live, right from the day one!

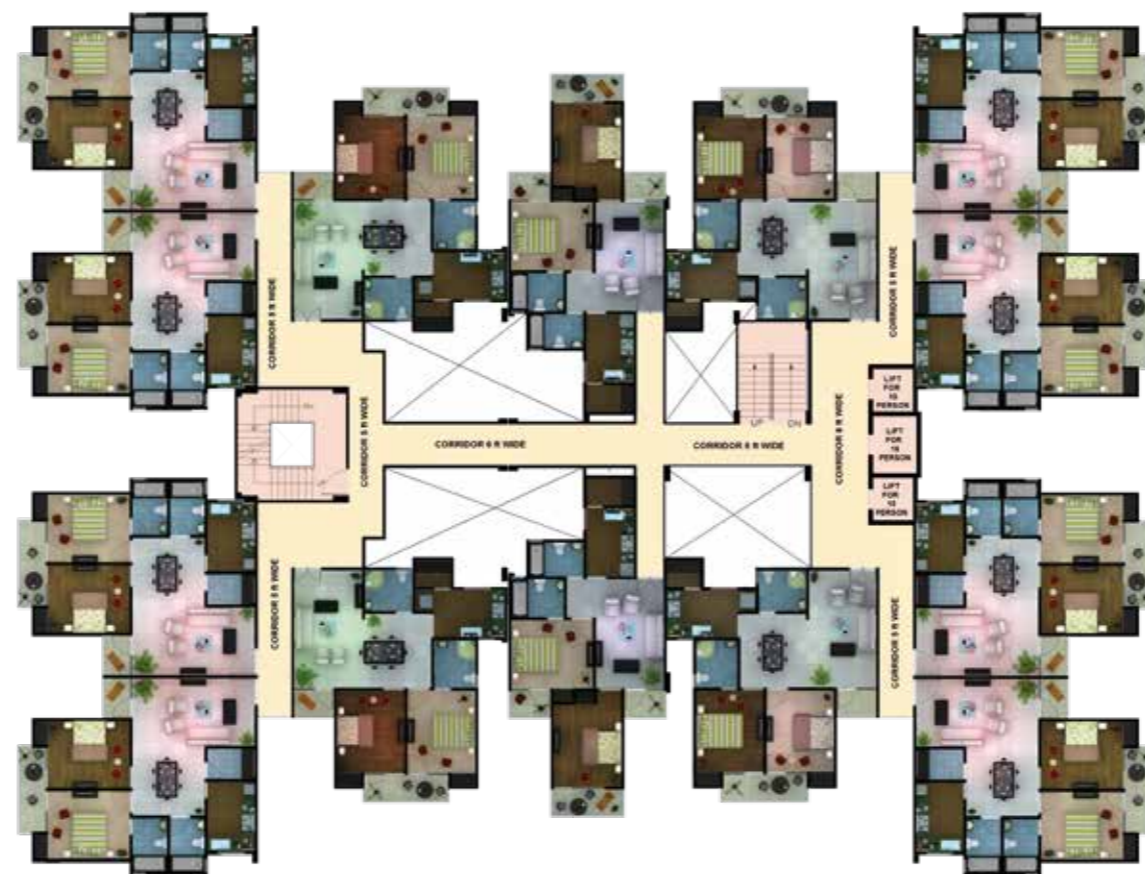
Representational Image



Representational Image

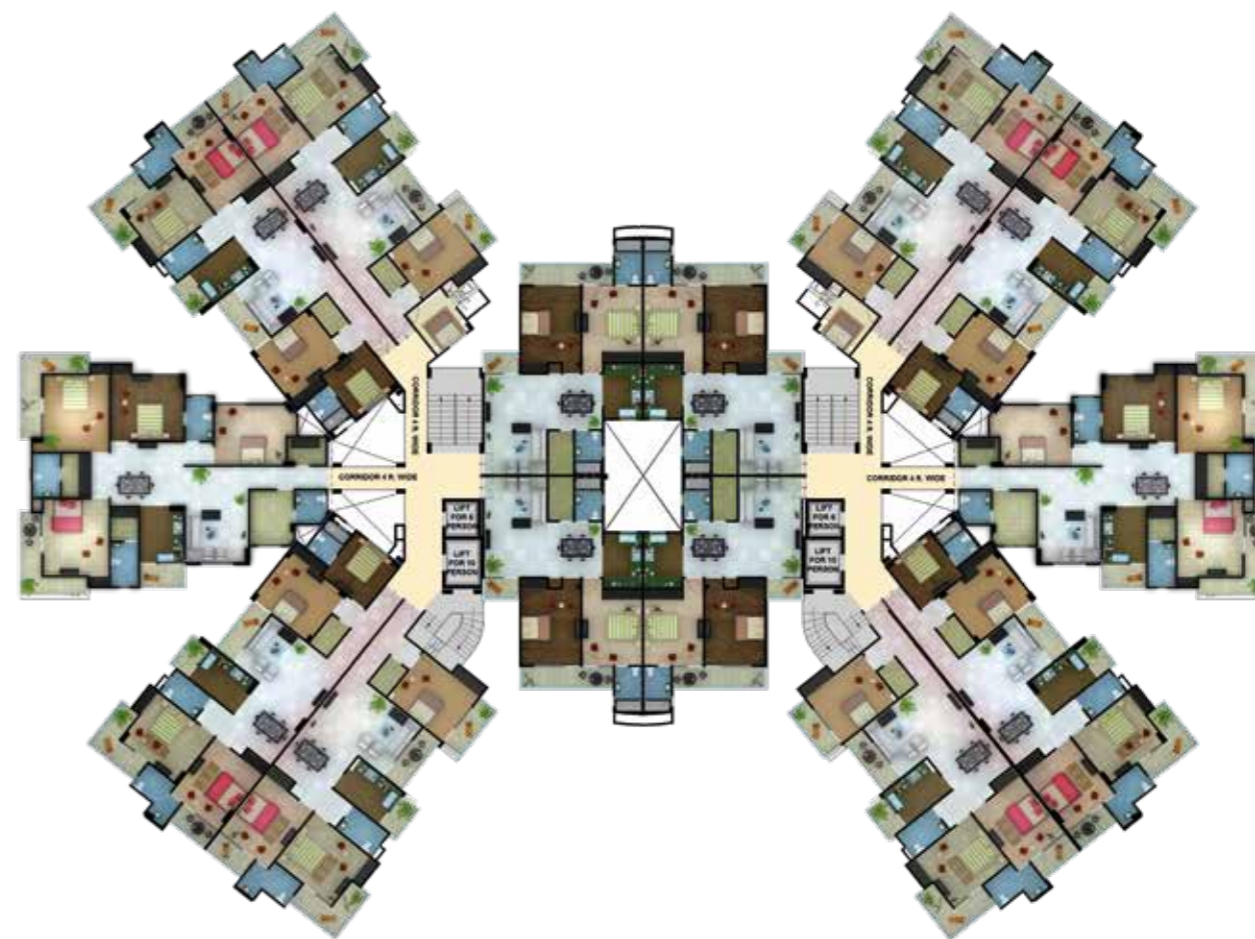
# NUCLEAR OR JOINT, WE HAVE OPTIONS FOR ALL FAMILIES.

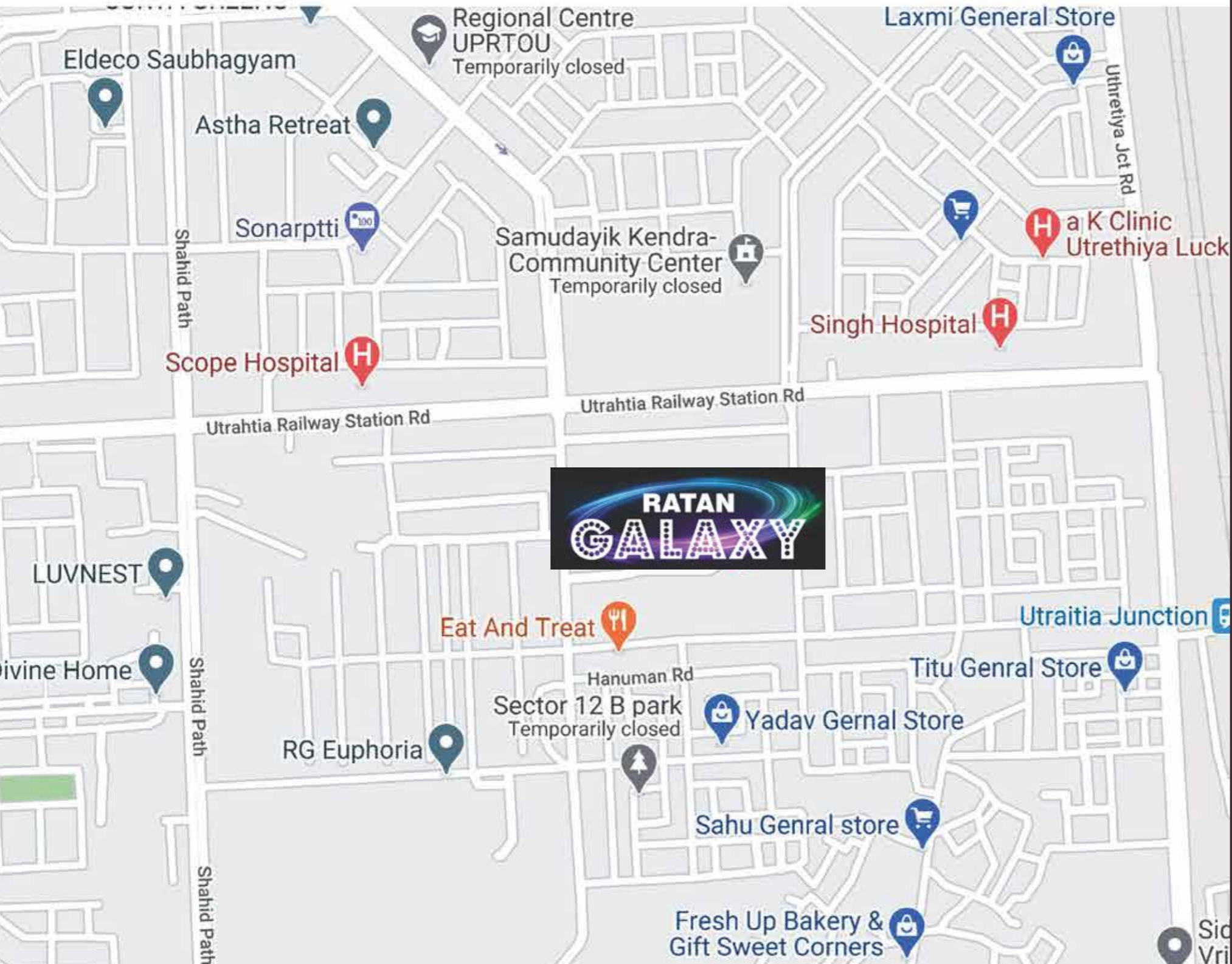
Whether you are a joint family steeped in traditions or a double income group nuclear family or simply a nuclear family. We have elaborate 1, 2, 3, and 4 BHKs to suit your taste and budget.



## SITE PLAN

---





## STRATEGICALLY LOCATED IN 'UPCOMING LUCKNOW'

Ratan Galaxy is strategically located in Vrindavan Yojna, next to Shaheed Path. It's the 'Future Upcoming Area' of Lucknow. You are closely surrounded with Schools, Super Markets, Hospitals and a newly laid expressway that zooms you to any part of the city in no time.

- Lucknow Airport-6 Km
- Hazratganj Market-9 Km
- Malls And Hospitals-2 Km (Best Price And Lulu Malls)
- Medanta Hospital-2 Km
- SGPGI-5 Km
- CBSE And ICSE Schools-1 Km

# INTELLIGENTLY DESIGNED FOR AN IMPRESSIVE LOOK

We have spent hours and hours with expert architects to design a complex where every nook and corner is planned for your convenience and luxury. And a complex that will proudly host your next generations.

- Site Plan Total Coverage Area- 580000 sq/ft—super built-up area



# THRIVING ON TRUST

Ratan Housing Development Limited stands tall with a strong legacy of over three decades in residential and commercial construction. Creating Happy Communities is central to our construction philosophy. We believe in delivering a perfect harmony of inspiring construction quality, inventive designs and thoughtful amenities for one of the most important investments done in life. Ratan's more than 80 completed projects are a towering testimony of delivering value to our customers. We create homes that host happiness.







OFFICE ADDRESS FOR SAID PROJECTS:  
Ratan Housing Development Limited  
113/70, Swaroop nagar, Kanpur.  
Office contact details - 9935556601| 9935556602

**RERA REGISTRATION NO.: UPRERAPRJ8949**